



Innovation happens naturally,  
ask SABIC



**chemelot**

The chemical innovation community

## Innovation happens naturally, ask SABIC

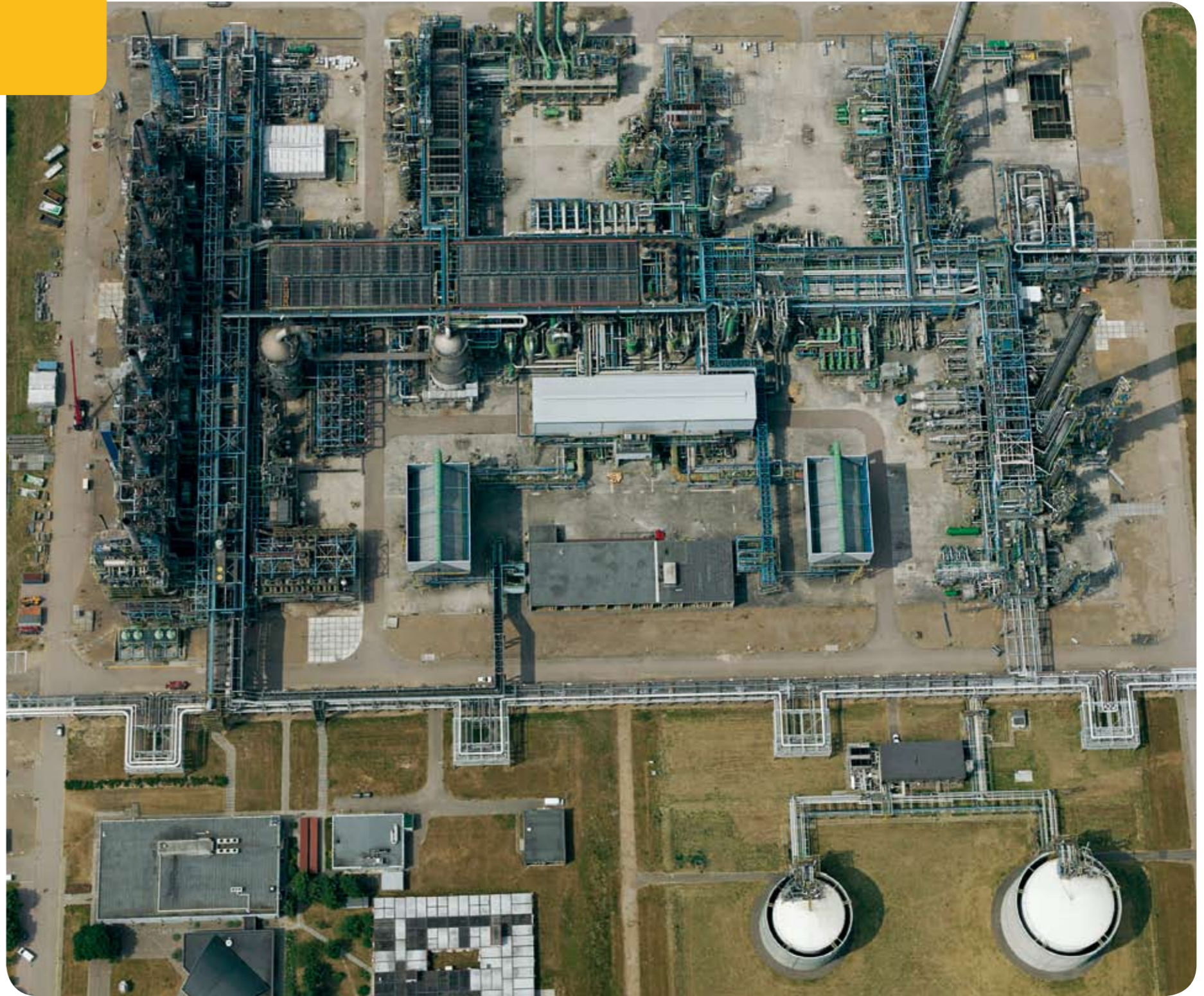
When SABIC had the opportunity to take over a number of DSM plants a few years ago, their location played a major role. It wasn't just the excellence of the plants; their location was also ideal. Chemelot offers all the facilities a plant owner could possibly need. The community boasts an extensive network of pipelines, railroad lines and even a harbour, allowing fast and smooth transportation of the raw materials needed for the plants and the products produced there. Another factor that played a role in SABIC's decision was the option to share existing facilities and services such as security, the fire brigade and the joint purchase of energy. The kinds of services that make it possible for an organization such as SABIC to work in a highly efficient manner. The final deciding factor was Chemelot's innovative culture. On the Chemelot Campus, companies share their expertise in working on new developments and process improvements. Although SABIC has its own research department on Chemelot, it also benefits from the knowledge and equipment of other organizations, for areas outside its own expertise, such as process improvements. And other companies in turn make use of SABIC's know-how, resulting in effective knowledge sharing across the whole Campus.





# ETBE, developed and manufactured here

In the spring of 2006, SABIC introduced the environmentally friendly fuel ETBE (bioethanol) in the Netherlands. The launch was a complete success, with well-known and leading gasoline producers being amongst the first customers. The whole ETBE project, from business case to market launch, was realized in just fifteen months. Particularly impressive was the breakneck speed at which the original MTBE plant (methanol) was converted into an ETBE production facility: the entire operation took a mere ten days!





## Best in class, acknowledged globally

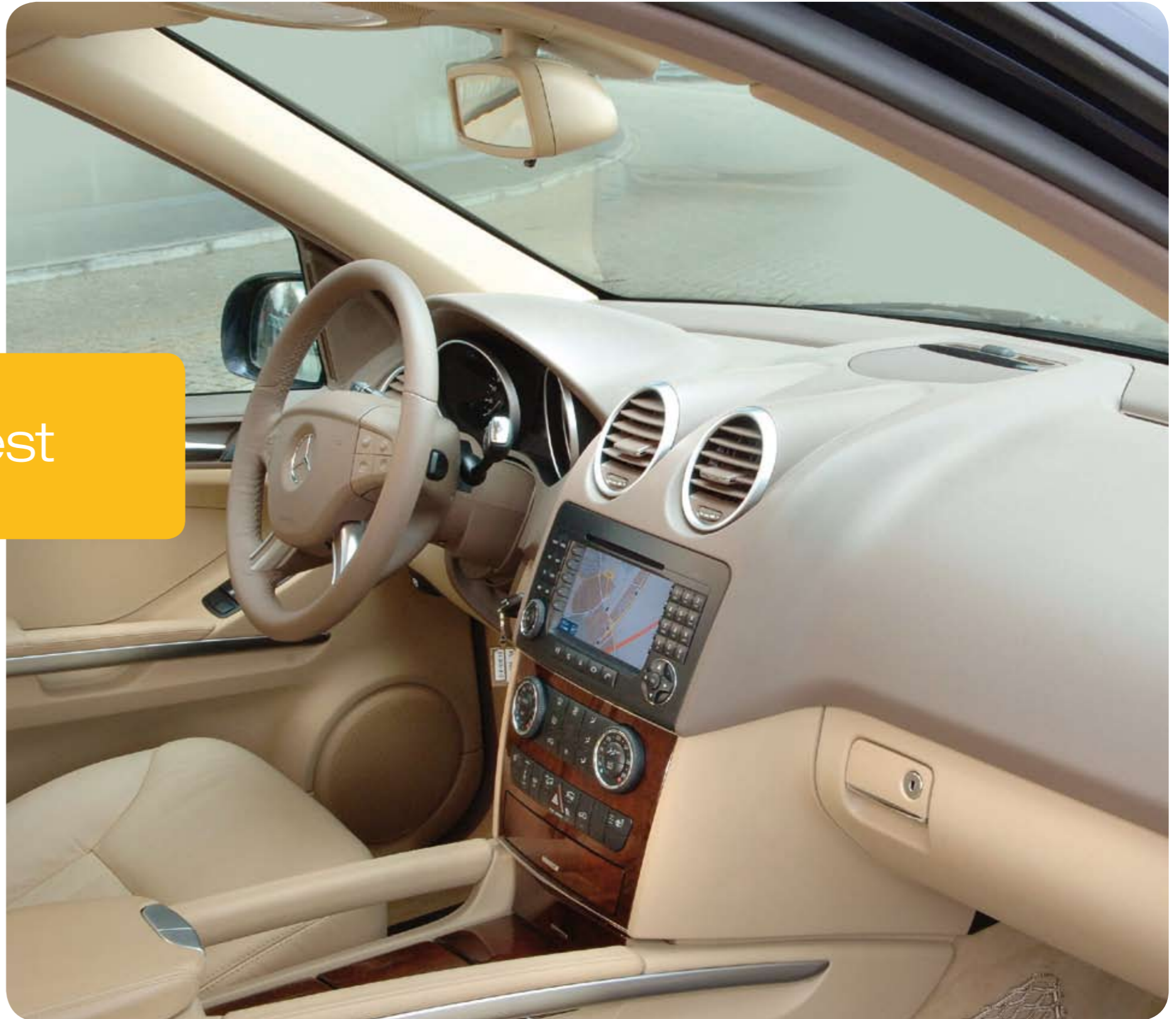
SABIC, established in Saudi Arabia in 1976, is one of the biggest players in the petrochemical market. The company aims to have a leading position in Europe by 2010. It's an ambitious target, which the petrochemical giant hopes to realize through the development of new products and by further streamlining of its business processes. SABIC Europe's new head office is in Sittard (The Netherlands) in the immediate vicinity of Chemelot. A prime location that perfectly suits the company's ambitions and gives a powerful message that SABIC is taking root in this region.





Trusted by the best

As well as base chemicals, SABIC also supplies plastic granules, based on ethylene and propylene. These are used in a wide range of applications including films (for example for crisps bags), bottles, storage boxes, toys, pipes and fibers for clothing. The automotive industry has also embraced plastics, which it uses in car components such as dashboards and bumpers. Thanks to Chemelot's excellent road, rail, water and pipeline connections, SABIC can rely on an uninterrupted supply of raw materials and the smooth delivery of its finished products to customers. For example, pipelines are used for the supply of naphtha from the Antwerp harbour in Belgium to Geleen and from Geleen to the Ruhr area in Germany. SABIC transports finished products to its customers by making use of the harbour, the roads and the railway lines near the Chemelot site. Furthermore, several carriers are in close proximity to ensure the site has optimum logistic flexibility.





## SABIC is now working on...

SABIC continually invests in the development of new technology and the optimization of existing facilities. The result is a dynamic improvement of its production processes which the excellent infrastructure and site services at Chemelot certainly contribute to.

